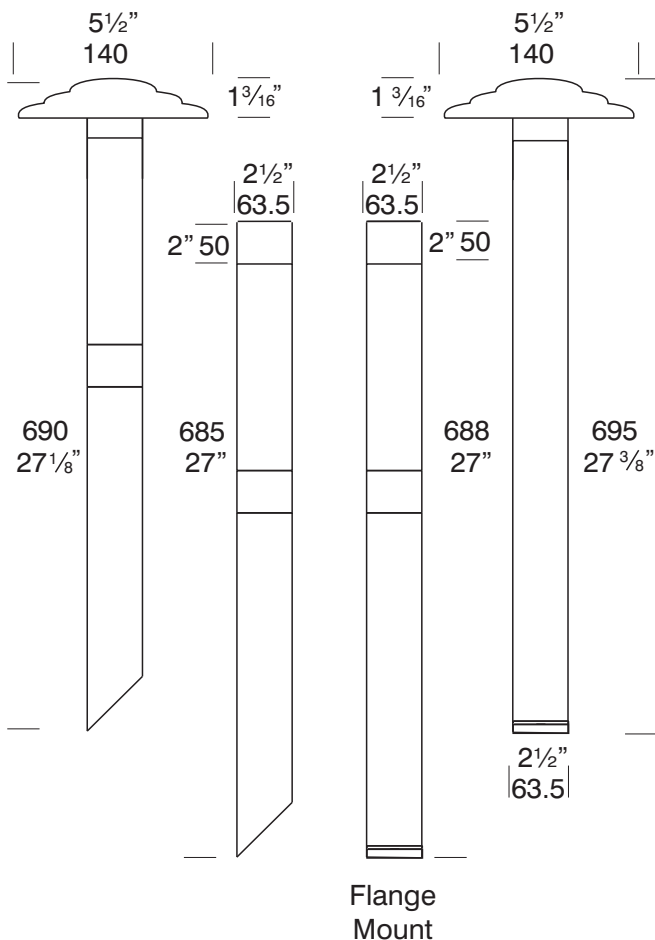


Bollard Metal Halide

Cat. No. BOL/MH



Metal Halide lamps are highly energy efficient light sources using less energy and out putting 2 - 3 times the light of a halogen lamp. The Bollard 700mm (27") is ideal for gardens. The lens reflects light at two angles through an anti-glare mesh directly onto the ground and horizontally to illuminate the surrounding landscape.

Ordering Information

Luminaire Type

BOL/MH - Bollard

Material/Finish

BK - Black
 BZ - Bronze
 GN - Green
 MS - Metallic Silver
 WH - White

 COP - Copper
 SS - 316 Stainless Steel

Accessories

CJK150 - Cable Joint Kit
 H - Anti Glare Hood
 FM - Flange Mount



Ordering Example: BOL/MH BZ - Bollard Metal Halide in Bronze
 BOL/MHFM COP - Bollard Metal Halide Flange Mount Copper

(Accessories ordered separately)

Design Patent Pending



FACTORY: Ph: 64-9-528 9471 Fax: 64-9-528 9361.
USA: Ph. 310 560 7310 Fax. 1 877 692 4589.
 hunza@hunza.co.nz www.hunza.co.nz
 Specifications may change without notice.

130 Felton Mathew Ave, Glen Innes, Auckland, New Zealand.
 3237 Long Island St, W. Sacramento, California 95691, USA.
 Manufactured in New Zealand.

Ver 1.3

© 2007 Hunza Holdings Ltd

Luminaire Construction

CNC machined from one of the following metals:

High corrosion resistant 63.5mm (2½") x 10mm (25/64") aluminium. End cap - solid aluminium 63.5mm (2½") rod, pole - 63.5mm (2½") x 3.25 mm (1/8") x 620mm (24½") with chromate substrate and high UV resistant polyester powder coat -

Colours Black, Bronze, Green, Metallic Silver, White.

Copper 63.5mm (2½") x 10mm (13/32"). End cap - solid copper 63.5mm (2½") rod, pole - 63.5mm (2½") x 3.25 mm (1/8") x 620mm (24½").

316 Stainless steel 63.5mm (2½") x 9mm (11/32"). End cap - solid 316 stainless steel 63.5mm (2½") rod pole - 63.5mm (2½") x 3.25 mm (1/8") x 620mm (24½").

Mounting

Set in concrete in the ground or specify with flange mount option, which bolts to concrete, tiling or wooden decks.

Features

Lens:

UV stable acrylic with anti-glare mesh and dual angle reflector projects light horizontally and at 45° onto the ground.

Gaskets:

Silicone, iron impregnated 220°C (428°F).

Lamp Holders:

GX10 - 350°C (662°F) ceramic multi contact lamp holder with 250°C (480°F) teflon cables.

Accessories:

Cable Joint Kit (Cat. CJK150)
Anti-Glare Hood (Cat. H).
Flange Mount (Cat. FM).

Standards

IP66 AS/NZS 60598.2.2



UL1598

Luminaire Weight

Alum 2.700kg (5lb 15oz)
Cop 5.200kg (11lb 7oz)
SS 3.770kg (9lb 4oz)

Power Supply

Ballast built in: 230 -240 volt ac 50Hz.

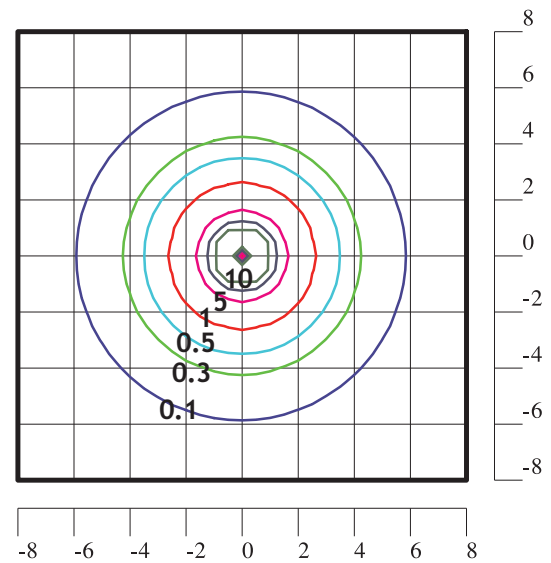
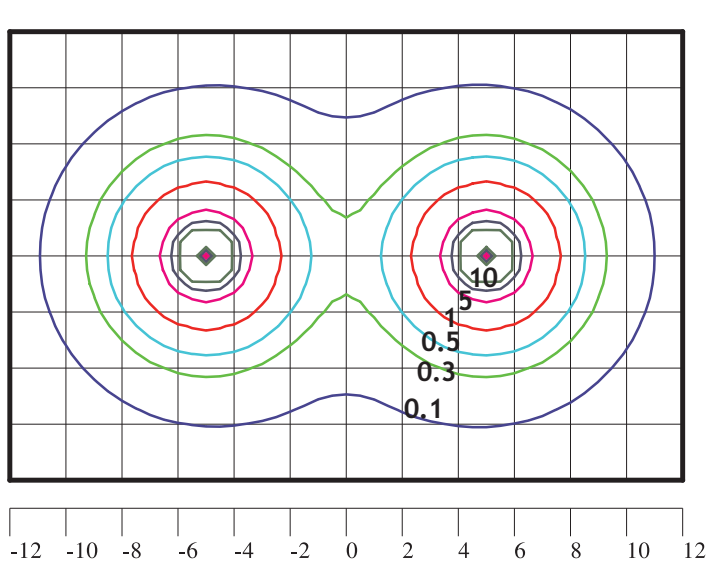
USA and Canada:

Ballast built in: 120 volt ac 60Hz.

Luminaire: supplied with

MR16 GX10 20 watt M156 lamp.

Bollard 700 - 20w Metal Halide Lamp



FACTORY: Ph: 64-9-528 9471 Fax: 64-9-528 9361.
USA: Ph. 310 560 7310 Fax. 1 877 692 4589.
hunza@hunza.co.nz www.hunza.co.nz
Specifications may change without notice.

130 Felton Mathew Ave, Glen Innes, Auckland, New Zealand.
3237 Long Island St, W. Sacramento, California 95691, USA.
Manufactured in New Zealand.
© 2007 Hunza Holdings Ltd

Ver 1.3